

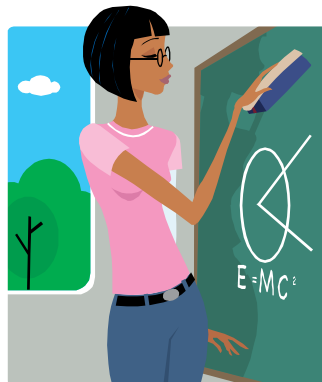


**THE KINGS OF WESSEX SCHOOL**  
*A Church of England Foundation School*  
Specialist Technology College



# **EASTER REVISION COURSES**

Tuesday 6<sup>th</sup> April to Friday 16<sup>th</sup> April 2010





February 2010

Dear Parents/Guardians

Welcome to our Easter Revision Booklet for 2010. In addition to our study support offered within term-time, once again some staff have offered to provide a revision course during the Spring Term break.

Any student may request a place at any of these sessions. If your son or daughter is interested in any of these sessions they will need to complete the application form at the back of this booklet and return it to the School Office by no later than Friday 26<sup>th</sup> February 2010.

Places are limited and will therefore be allocated on a first come, first served basis. These Easter Revision sessions are very popular and we will try to meet your requests wherever possible, but cannot guarantee a place. If you are successful in securing a place then we would ask that you honour this booking to avoid valuable sessions being wasted.

Mentors will also be advising students as to which sessions to prioritise.

Once sessions have been booked we will write to confirm which Easter Revision sessions your son/daughter has been allocated.

Students attending Easter Revision will need to provide their own packed lunch and transport. Students do not have to wear uniform for Easter Revision, however exemplary behaviour is expected and the school Code of Conduct will apply. Parents will be contacted if any student misbehaves or is in breach of the school rules.

We know that students will find these courses beneficial and a useful addition to their own revision.

Yours sincerely

**Barbara Marshall**  
**Deputy Headteacher**

## GCSE EASTER REVISION COURSES

Subject	Level	Date and Time of Course	Room	An Outline of the Day
English	GCSE	Thursday 15 <sup>th</sup> April 9.00 – 3.00	E5	For A/B Borderline students – English Paper 1 and Paper 2
English	GCSE	Thursday 8 <sup>th</sup> April 9.00 – 3.00 <b>OR</b> Thursday 15 <sup>th</sup> April 9.00 – 3.00	E4	For C/D borderline students – English Paper 1 Section A and Paper 1&2 the writing sections.
Maths Module 5 Foundation	GCSE Foundation	Tuesday 13 <sup>th</sup> April 9.00 – 3.00 <b>OR</b> Wednesday 14 <sup>th</sup> April 9.00 – 3.00	M3	Area, algebra and graphs - there will be whole group sessions revising key skills in the morning followed by a problem solving workshop in the afternoon. Foundation Students only.
Maths Module 5 Higher	GCSE Higher	Tuesday 13 <sup>th</sup> April 9.00 – 3.00 <b>OR</b> Wednesday 14 <sup>th</sup> April 9.00 – 3.00	M1	Algebra, geometry and graph skills - there will be whole group sessions revising key skills in the morning followed by a problem solving workshop in the afternoon. Higher students only.
Science Biology Foundation	GCSE Foundation	Friday 16 <sup>th</sup> April 9.00 – 3.00	B3	To revise content of Biology 2 Foundation Paper.
Science Biology Higher	GCSE Higher	Thursday 15 <sup>th</sup> April 9.00 – 3.00	B3	To revise content of Biology 2 Higher Paper.
Science Chemistry Foundation	GCSE Foundation	Wednesday 7 <sup>th</sup> April 9.00 – 3.00	C3	To revise content of Chemistry 2 Foundation Paper.
Science Chemistry Higher	GCSE Higher	Tuesday 6 <sup>th</sup> April 9.00 – 3.00	C3	To revise content of Chemistry 2 Higher Paper.
Science Physics Foundation	GCSE Foundation	Tuesday 6 <sup>th</sup> April 9.00 – 3.00	P3	To revise content of Physics 2 Foundation Paper.
Science Physics Higher	GCSE Higher	Wednesday 7 <sup>th</sup> April 9.00 – 3.00	P3	To revise content of Physics 2 Higher Paper.

**GCSE EASTER REVISION COURSES CONTINUED**

Subject	Level	Date and Time of Course	Room	An Outline of the Day
Design Technology Food Technology	GCSE	Friday 9 <sup>th</sup> April ½ day 9.00 – 12.00 <b>OR</b> 12.30 – 3.30	DT5	Combination of practical questions, work on the prep paper and a small practical element. (Once a place has been confirmed please see Mrs MacKinnon for details of practical.)
Religious Education Full Course	GCSE	Tuesday 13 <sup>th</sup> April 9.00 – 3.00	RE1	Buddhist Key word learning and exam practice. Revisiting the five units and key areas that prove problematic.
Religious Education Short Course	GCSE	Tuesday 13 <sup>th</sup> April 9.00 – 3.00	RE2	Key word learning and exam practice. Revisiting the five units and key areas that prove problematic.
Art	GCSE	Tuesday 6 <sup>th</sup> April 9.00 – 3.00 <b>OR</b> Wednesday 7 <sup>th</sup> April 9.00 – 3.00	A2	To complete and improve all GCSE Art and Design Coursework
Business Studies	GCSE Foundation	Tuesday 6 <sup>th</sup> April 9.00 -3.00	BS2	Revision of business studies content and important practice in Exam technique for Foundation students.
Business Studies	GCSE Higher	Tuesday 6 <sup>th</sup> April 9.00 – 3.00	BS1	Revision of business studies content and important practice in Exam technique for Higher students.
Geography	GCSE Foundation	Wednesday 14 <sup>th</sup> April 9.00 – 3.00	G1	Morning session will cover physical topics – coasts, rivers, plate tectonics. Afternoon session will cover human topics – development and population. For Foundation students only.
Geography	GCSE Higher	Thursday 15 <sup>th</sup> April 9.00 – 3.00	G1	Morning session will cover physical topics – coasts, rivers, plate tectonics, rocks and landscapes. Afternoon session will cover human topics – development and population. For Higher students only.

## GCSE EASTER REVISION COURSES CONTINUED

Subject	Level	Date and Time of Course	Room	An Outline of the Day
History	GCSE	Tuesday 6 <sup>th</sup> April 09.00 – 3.00	H2 & RE2	Covering the content and skills required for both the International Relations and British Depth Study exam papers.
Languages French	GCSE	Tuesday 6 <sup>th</sup> April 9.00 – 3.00	L4/LIT	General revision and preparation for GCSE French exam.
Languages German	GCSE	Tuesday 6 <sup>th</sup> April 9.00 – 3.00	L1/LIT	General revision and preparation for GCSE German exam.
Music	GCSE	Friday 9 <sup>th</sup> April 9.00 – 3.00	MU1	<ul style="list-style-type: none"> <li>• General Musical terminology</li> <li>• Music for Dance – Key Terms &amp; Concepts</li> <li>• Orchestral Landmarks – Key Terms &amp; Concepts</li> <li>• Music for Film – Key Terms &amp; Concepts</li> <li>• Popular Song Since 1960 – Key Terms &amp; Concepts</li> <li>• Music for Special Events – Key Terms &amp; Concepts</li> <li>• Exam technique and practise questions</li> </ul>
Photography	GCSE	Tuesday 6 <sup>th</sup> April 9.00 – 3.00 <b>OR</b> Wednesday 7 <sup>th</sup> April 9.00 – 3.00	A5	<p>The revision session will enable students to catch up on or add to their coursework to ensure that they reach their target grades or go above them.</p> <p>Students will be able to use the black and white darkroom as well as the Infinity Curve studio, the computers and digital drawing tablets.</p> <p>Students will be able to process and develop their films as well as produce pinhole and cyanotype images.</p> <p>Specific tasks will be set for those students missing areas of coursework or for those that need to strengthen existing pieces.</p>

**AS/A2 EASTER REVISION COURSES**

Subject	Level	Date and Time of Course	Room	An Outline of the Day
English	AS	Friday 16 <sup>th</sup> April 9.00 – 12.00 & 12.30 – 3.30	E5	AS Level English Literature –: The morning session will cover <i>The Great Gatsby</i> The afternoon session will cover <i>Christina Rossetti</i> .
Maths C2	AS	Monday 12th April 9.00 – 3.00	M3	Trigonometry, integration and exponentials - there will be whole group sessions revising key skills in the morning followed by a problem solving workshop in the afternoon.
Maths M2	A2	Friday 16 <sup>th</sup> April 9.00 – 3.00	M1	Dynamics and static forces - there will be whole group sessions revising key skills in the morning followed by a problem solving workshop in the afternoon.
Maths C4	A2	Friday 16 <sup>th</sup> April 9.00 – 3.00	M5	Integration, vectors and differential equations - there will be whole group sessions revising key skills in the morning followed by a problem solving workshop in the afternoon.
Maths FP2/3	A2	Friday 16 <sup>th</sup> April 9.00 – 3.00	M3	Complex numbers, trigonometry and vectors - there will be whole group sessions revising key skills in the morning followed by a problem solving workshop in the afternoon.
Science Biology	AS	Thursday 15 <sup>th</sup> April 9.00 – 3.00	B1	To revise content of Biology AS Module F212.
Science Biology	A2	Friday 16 <sup>th</sup> April 9.00 – 3.00	B1	To revise content of Biology A2 Module F215.
Science Chemistry	AS	Tuesday 6 <sup>th</sup> April 9.00 – 3.00	C2	To revise content of Chemistry AS Module F332.
Science Chemistry	A2	Wednesday 7 <sup>th</sup> April 9.00 – 3.00	C2	To revise content of Chemistry A2 Module F335.
Science Physics	AS	Friday 16th April 9.00 – 3.00	P2	To revise content of Physics AS Module 2.
Science Physics	A2	Thursday 15 <sup>th</sup> April 9.00 – 3.00	P2	To revise content of Physics A2 Module 5.

**AS/A2 EASTER REVISION COURSES CONTINUED**

Subject	Level	Date and Time of Course	Room	An Outline of the Day
Drama	AS/A2	Wednesday 7 <sup>th</sup> April 9.00 – 3.00	DR1	Practice for the performance examination (60%) on 12 <sup>th</sup> May for group and monologue performances. This will involve half a day on the group piece and then practice time for the monologue piece.
ICT & Computing	AS/A2	Tuesday 6 <sup>th</sup> April 9.00 – 3.00	IT3	Computing – Revising for Summer Exams and Re-sits. ICT - Y12 Coursework catch-up for Unit 1 and revision for exam in Summer. ICT - Y13 Coursework catch-up for Unit 4 and revision for Unit 3 exam.
History	AS	Tuesday 6 <sup>th</sup> April 09.00 – 12.00 & 12.30 – 3.30	H3	Morning Session will revise the content and essay writing for the Pitt to Peel Course. Afternoon Session will revise content and source skills for Italian Unification.
History	A2	Tuesday 6 <sup>th</sup> April 9.00 – 12.00 & 12.30 - 3.30	LRC AM H1 PM	Morning Session will work on the Interpretations and Investigation Unit. Afternoon Session will look at essay writing techniques for the Russia and its Rulers course.
Languages German	AS	Wednesday 7 <sup>th</sup> April ½ day 9.00 – 12.00	L4/LIT	General revision and preparation for German AS Exam.
Languages German	A2	Wednesday 7 <sup>th</sup> April ½ day 12.30 – 3.30	L4/LIT	General revision and preparation for German A2 Exam.
Music	AS	Thursday 8 <sup>th</sup> April 9.00 – 3.00	MU1	<ul style="list-style-type: none"> <li>● Mozart Analysis &amp; Essay Writing – Exposition, Development &amp; Recapitulation Movt 1 / Minuet &amp; Trio</li> <li>● Musical Theatre – Oklahoma Essay Writing</li> <li>● Musical Theatre – West Side Story Essay Writing</li> <li>● Listening – Key Terms &amp; Concepts</li> <li>● Practise questions</li> <li>● Exam Techniques</li> </ul>
Philosophy	AS	Tuesday 6 <sup>th</sup> April ½ day 9.00 – 12.00	RE1	How to answer an AS exam question in the 45 minutes allocated. Revising key Philosophy topics planning answers with essay writing tips.

### AS/A2 EASTER REVISION COURSES CONTINUED

Subject	Level	Date and Time of Course	Room	An Outline of the Day
Ethics	AS	Tuesday 6 <sup>th</sup> April ½ day 12.30 – 3.30	RE1	How to answer an AS exam question in the 45 minutes allocated, applying ethical theory to key issues. Revising key topics planning answers with essay writing tips.
Photography	AS/A2	Thursday 8 <sup>th</sup> April 9.00 – 3.00 <b>OR</b> Friday 9 <sup>th</sup> April 9.00 – 3.00	A5	The revision session will enable students to catch up on or add to their coursework to ensure that they reach their target grades or go above them. Students will be able to use the black and white darkroom as well as the Infinity Curve studio, the computers and digital drawing tablets. Students will be able to process and develop their films as well as produce pinhole and cyanotype images. Specific tasks will be set for those students missing areas of coursework or for those that need to strengthen existing pieces.
Psychology	AS	Tuesday 13 <sup>th</sup> April 9.00 – 3.00	PS1	AS – Revision of core studies and approaches.
Psychology	A2	Tuesday 13 <sup>th</sup> April 9.00 – 3.00	PS2	A2 – Revision of Forensic Psychology and Research Methods.

## Easter Revision Courses 2010 - APPLICATION FORM

STUDENT NAME:				TUTOR GROUP:		MENTOR:	
LEVEL	SUBJECT	DATE OF COURSE *	✓	LEVEL	SUBJECT	DATE OF COURSE *	✓
GCSE	English A/B students	Thursday 15 <sup>th</sup> April	✓	AS	English Literature AM Session	Friday 16 <sup>th</sup> April AM (9.00-12.00)	✓
GCSE	English C/D students	Thursday 8 <sup>th</sup> April OR		AS	English Literature PM Session	Friday 16 <sup>th</sup> April PM (12.30-3.30)	
GCSE	English C/D students	Thursday 15 <sup>th</sup> April		AS	Maths – C2	Monday 12 <sup>th</sup> April	
GCSE	Maths – Module 5 Foundation	Tuesday 13 <sup>th</sup> April OR		A2	Maths – M2	Friday 16 <sup>th</sup> April	
GCSE	Maths – Module 5 Foundation	Wednesday 14 <sup>th</sup> April		A2	Maths – C4	Friday 16 <sup>th</sup> April	
GCSE	Maths – Module 5 Higher	Tuesday 13 <sup>th</sup> April OR		A2	Maths – FP2/3	Friday 16 <sup>th</sup> April	
GCSE	Maths – Module 5 Higher	Wednesday 14 <sup>th</sup> April		AS	Science - Biology	Thursday 15 <sup>th</sup> April	
GCSE	Science – Biology Foundation	Friday 16 <sup>th</sup> April		A2	Science - Biology	Friday 16 <sup>th</sup> April	
GCSE	Science – Biology Higher	Thursday 15 <sup>th</sup> April		AS	Science - Chemistry	Tuesday 6 <sup>th</sup> April	
GCSE	Science – Chemistry Foundation	Wednesday 7 <sup>th</sup> April		A2	Science - Chemistry	Wednesday 7 <sup>th</sup> April	
GCSE	Science - Chemistry Higher	Tuesday 6 <sup>th</sup> April		AS	Science - Physics	Friday 16 <sup>th</sup> April	
GCSE	Science – Physics Foundation	Tuesday 6 <sup>th</sup> April		A2	Science - Physics	Thursday 15 <sup>th</sup> April	
GCSE	Science – Physics Higher	Wednesday 7 <sup>th</sup> April		AS/A2	Drama	Wednesday 7 <sup>th</sup> April	
GCSE	DT - Food Technology ½ day AM	Friday 9 <sup>th</sup> April AM (9.00–12.00)		AS/A2	ICT	Tuesday 6 <sup>th</sup> April	
GCSE	DT - Food Technology ½ day PM	Friday 9 <sup>th</sup> April PM (12.30-3.30)		AS	History - AS Morning Session	Tuesday 6 <sup>th</sup> April AM (9.00–12.00)	
GCSE	RE Full Course	Tuesday 13 <sup>th</sup> April		AS	History – AS Afternoon Session	Tuesday 6 <sup>th</sup> April PM (12.30–3.30)	
GCSE	RE Short Course	Tuesday 13 <sup>th</sup> April		A2	History – A2 Morning Session	Tuesday 6 <sup>th</sup> April AM (9.00–12.00)	
GCSE	Art	Tuesday 6 <sup>th</sup> April OR		A2	History – A2 Afternoon Session	Tuesday 6 <sup>th</sup> April PM (12.30–3.30)	
GCSE	Art	Wednesday 7 <sup>th</sup> April		AS	Languages – German AS ½ day AM	Wednesday 7 <sup>th</sup> April AM (9.00-12.00)	
GCSE	Business Studies – Foundation	Tuesday 6 <sup>th</sup> April		A2	Languages – German A2 ½ day PM	Wednesday 7 <sup>th</sup> April PM (12.30-3.30)	
GCSE	Business Studies – Higher	Tuesday 6 <sup>th</sup> April		AS	Music	Thursday 8 <sup>th</sup> April	
GCSE	Geography - Foundation	Wednesday 14 <sup>th</sup> April		AS	Philosophy ½ day AM	Tuesday 6 <sup>th</sup> April AM (9.00–12.00)	
GCSE	Geography – Higher	Thursday 15 <sup>th</sup> April		AS	Ethics ½ day PM	Tuesday 6 <sup>th</sup> April PM (12.30–3.30)	
GCSE	History	Tuesday 6 <sup>th</sup> April		AS/A2	Photography	Thursday 8 <sup>th</sup> April OR	
GCSE	Languages - French	Tuesday 6 <sup>th</sup> April		AS/A2	Photography	Friday 9 <sup>th</sup> April	
GCSE	Languages - German	Tuesday 6 <sup>th</sup> April		AS	Psychology	Tuesday 13 <sup>th</sup> April	
GCSE	Music	Friday 9 <sup>th</sup> April		A2	Psychology	Tuesday 13 <sup>th</sup> April	
GCSE	Photography	Tuesday 6 <sup>th</sup> April OR					
GCSE	Photography	Wednesday 7 <sup>th</sup> April					

***\*All sessions will run from 9am – 3.00pm unless otherwise indicated.***

I would like to attend the Revision Sessions ticked above. I understand that I am responsible for my own lunch and transport arrangements.  
I understand the commitment involved and undertake to adhere to the school's Code of Conduct.

Signature of Student: .....

Signature of Parent: .....

*Please ensure Student Name, Tutor Group and Mentor has been inserted into the box at the top of this form*

**TO BE COMPLETED AND RETURNED TO THE SCHOOL OFFICE NOT LATER THAN FRIDAY 26<sup>th</sup> February 2010.**

*Published January 2010*

*Copyright The Kings of Wessex School*

Station Road  
Cheddar  
Somerset BS27 3AQ

Tel: 01934 742608

Email: [office@kingsofwessex.somerset.sch.uk](mailto:office@kingsofwessex.somerset.sch.uk)

Web: [www.kowessex.co.uk](http://www.kowessex.co.uk)

The information contained in this booklet is correct at the time of publication but may be subject to change at any time