

Year 9 Choices 2025 Entry



Miss R Hopwood – Deputy Headteacher

Year 9 Choices



- Kings' Pastoral System
- Kings' Core Values
- I Curriculum
- The Subject Curriculum - Core Subjects, Option Box A, Option Box B
- Making The Right Choice
- Key Dates

BELIEVE AND SUCCEED

Kings' Pastoral System



Believe and Succeed

“Blessed are those who have not seen yet believe” John 20:29



Avalon

Mr R Coles

Camelot

Mr N Reynolds

Lyonesse

Mr M Rigg

Tintagel

Mrs J Darley



KINGS

CORE VALUES

AT KINGS WE VALUE



POSITIVITY



RESPECT



INTEGRITY



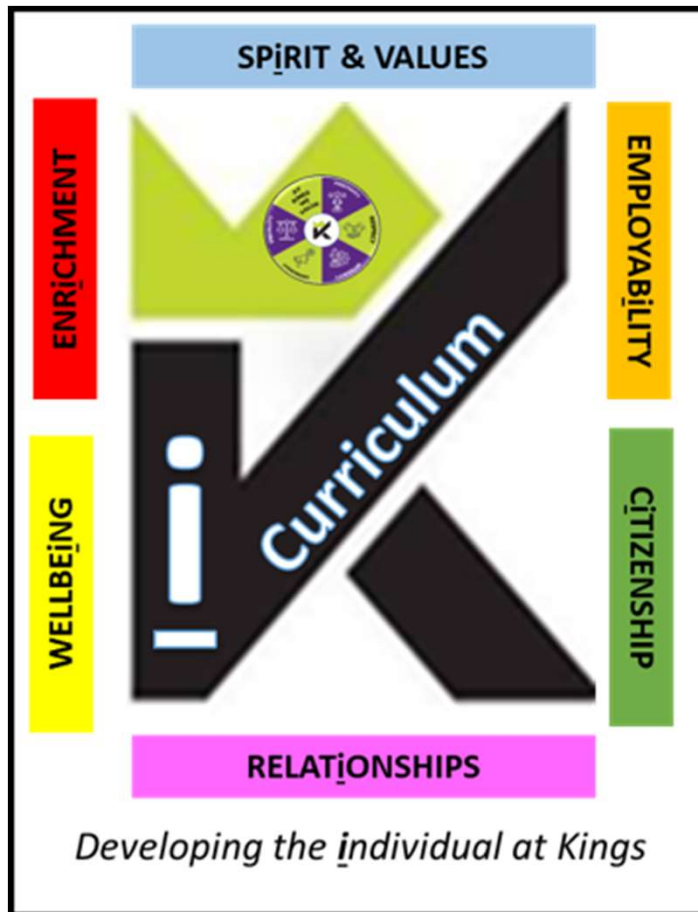
DEMOCRACY



EQUALITY

"Blessed are those who have not seen yet believe" John 20:29

Kings' | Curriculum



Enrichment
Wellbeing
Relationships
Spirit and Values
Citizenship
Employability

THE KINGS' CURRICULUM



2025 - 2028

	YEAR 9	YEAR 10	YEAR 11
CORE SUBJECTS	<i>English Language and Literature, Mathematics (Further Maths for some), Science (Combined or Triple), Religion, Philosophy and Ethics (RPE), Physical Education (PE), Personal, Social, Health, Economic Education (PSHEE) Citizenship</i>		
	<i>Project Work</i>	<i>Additional time for options subjects</i>	
OPTION BOX A*	<i>Students Study Two Courses</i>		
	<i>GCSE: Computer Science, French, Geography, History</i>		
OPTION BOX B	<i>Students Study Two Courses</i>		
	<i>GCSE: Art, Business Studies, Computer Science, Design and Technology, Drama, Food and Nutrition, French, Geography, History, Music, Physical Education, Textiles</i> <i>Vocational: Business Studies (BTEC), Health and Social Care (BTEC), iMedia ICT (OCR Nationals), Music Technology (NCFE), Sports Science (OCR Nationals)</i>		

*Students choose 2 option A courses. To be eligible for the EBacc they must study a language and humanities course

Core Subjects



Examined Subjects

- GCSE English Language
- GCSE English Literature
- GCSE Maths
- GCSE Science (Combined or Triple)
- GCSE Religion, Philosophy and Ethics

Non – examined Subjects

- Core Physical Education (PE)
- Citizenship
- PSHEE
- Year 9 Extended Curriculum Project

ALL students
ALL course
programmes

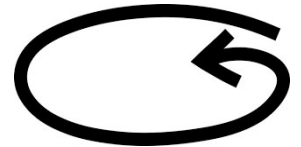
BELIEVE AND SUCCEED

The Extended Curriculum Project (ECP)



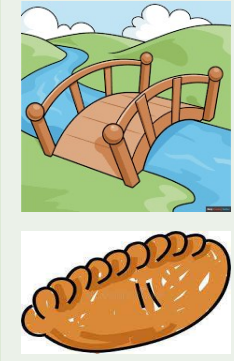





A broad, innovative, continuous and knowledge-rich curriculum that allows all students to fulfil their potential and to be well-equipped for the future.

Different groups will start in different places and carousel



- 2 hours every fortnight
- 6 projects
- 1 term each

Subject specialist teachers will deliver these lessons

Extending Horizons	Production	Beyond Reality	Let's Get Digital	Race Across Europe	People and Places
					

BELIEVE AND SUCCEED

Option Box A



GCSE qualifications

- Computer Science
- French
- Geography
- History



Learning Support Course

N.B. Invite only (after all students have made four choices)

Students
choose 2

BELIEVE AND SUCCEED

The English Baccalaureate (EBacc)



Since 2011 students who achieve 9-5 in each of the following areas are recognised as having achieved the EBacc:

- GCSE Science – Combined Science or Triple/Computer Science **9-5**
- GCSE English Language/Literature **9-5**
- GCSE Maths **9-5**
- GCSE History or Geography **9-5**
- GCSE French **9-5**

Demonstrating skills
and versatility

BELIEVE AND SUCCEED

The English Baccalaureate (EBacc)



- At Kings students study English, Maths and Science.
- Students choose two further Option Box A courses.
- The EBacc *combination* is not compulsory.
- Students will need to choose a humanities and languages option if they wish to be eligible.

- GCSE History or Geography **9-5**
- GCSE French **9-5**

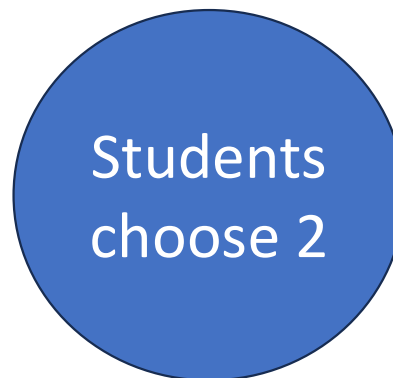
Demonstrating skills
and versatility

BELIEVE AND SUCCEED

Option Box B

GCSE qualifications

- Art, Craft and Design
- Business Studies
- Computer Science
- Design and Technology
- Drama
- Food Preparation and Nutrition
- French
- Geography
- History
- Music
- Physical Education
- Textiles



Vocational qualifications

- Enterprise (BTEC)
- Health and Social Care (BTEC)
- Creative iMedia ICT (OCR Nationals)
- Music Technology (NCFE)
- Sport Science (OCR Nationals)



Students will study two. Choose three IN ORDER OF PREFERENCE to include a reserve.

BELIEVE AND SUCCEED



Making the Right Choice

Types of Course

- GCSE – Traditional academic focus. Most are assessed by exams only.
- Vocational - Work related focus. Continuous assessment throughout the course with some external assessment.
- Learning Support – Not necessarily leading to a qualification but providing extra time and support to help some students access the curriculum.

BELIEVE AND SUCCEED

Making the Right Choice

Sedgemoor

Labour Market Information

TOP EMPLOYERS



Top employers in Sedgemoor include:

- DHL Supply Chain
- WM Morrison Supermarkets
- Avon and Somerset Police
- Refresco Beverages UK
- Bridgwater and Taunton College
- Muller UK & Ireland
- Somerset NHS Foundation Trust
- Bakkavor Foods
- Green Machine SW
- Toolstation

These employers contributed to over 6500 jobs in the area last year.



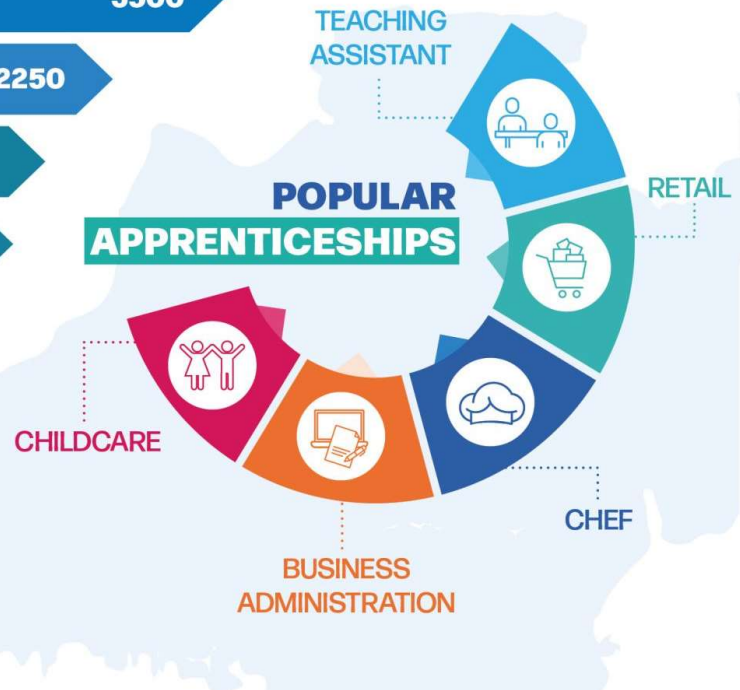
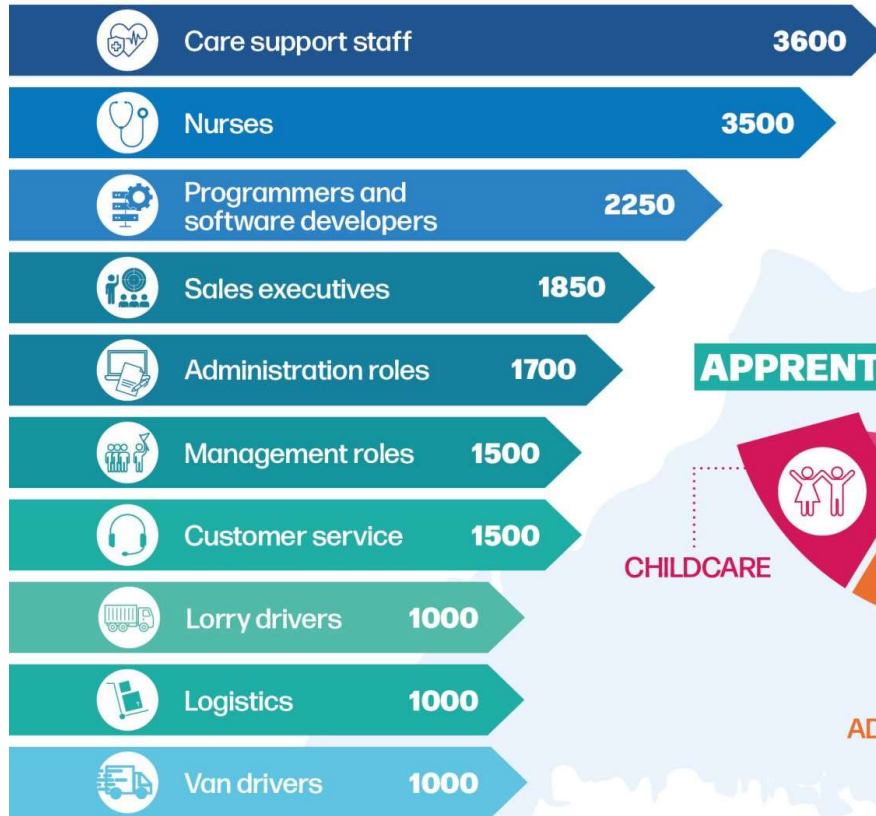
BELIEVE AND SUCCEED

Making the Right Choice

Sedgemoor

Labour Market Information

TOP JOB LISTINGS IN THIS AREA



BELIEVE AND SUCCEED

Key Dates



- **Tuesday 14 January**- Year 8 assembly at Hugh Sexey Middle School
- **Thursday 16 January**– Year 8 assembly at Fairlands Middle School
- **Tuesday 4 February** – Talks in the main Hall, Kings of Wessex Academy at 5.00pm and 6.00pm and the opportunity to visit every option subject.
- **Monday 24 February** – Deadline for options forms to be completed and returned to Kings (by post or email).

BELIEVE AND SUCCEED

Important Information

- Read the information booklet – Year 9 Choices
- Talk about your likes, skills and career aspirations
- Make a list of questions
- Attend the Choices Evening on 4 February
- Students need to choose two options in box A and 2 options in box B (plus one reserve)
- Complete and return the form to Kings by 24 February 2025



Choose wisely. We cannot guarantee that students can change courses although we will try to accommodate swaps, where possible, until October half term.

BELIEVE AND SUCCEED

Questions?



BELIEVE AND SUCCEED