

# EXPLORING CAREER OPTIONS NEAR YOU!

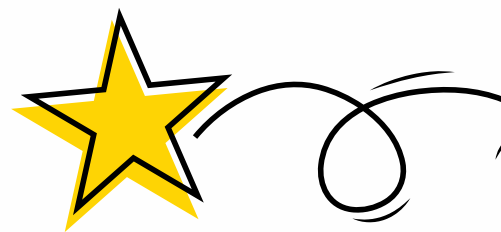


**Somerset**  
CAREERS HUB

THE **CAREERS &  
ENTERPRISE**  
COMPANY

CAREERS 4  
ALL YEARS

# CONTENTS



<b>Labour Market Information</b>	<b><u>3</u></b>
<b>Exploring Career Options Near you</b>	<b><u>4</u></b>
<b>Exploring the Energy Sector</b>	<b><u>5</u></b>
<b>Exploring the Engineering Sector</b>	<b><u>7</u></b>
<b>Exploring the Digital and Cyber Security Sector</b>	<b><u>9</u></b>
<b>Exploring the Agricultural Sector</b>	<b><u>11</u></b>
<b>Exploring the Health and Social Care Sector</b>	<b><u>13</u></b>
<b>Skills, qualifications and pathways</b>	<b><u>15</u></b>
<b>Exploring Employers in Somerset</b>	<b><u>17</u></b>
<b>Jones Building Group</b>	<b><u>18</u></b>
<b>Müller UK &amp; Ireland</b>	<b><u>19</u></b>
<b>Somerset Larder</b>	<b><u>20</u></b>
<b>Somerset NHS</b>	<b><u>21</u></b>
<b>Leonardo</b>	<b><u>22</u></b>
<b>Screwfix</b>	<b><u>23</u></b>
<b>YTL UK and Wessex Water</b>	<b><u>24</u></b>
<b>Hinkley Point C   EDF Energy</b>	<b><u>25</u></b>
<b>Stantec</b>	<b><u>26</u></b>
<b>Useful Links to plan your next steps</b>	<b><u>27</u></b>

# LABOUR MARKET INFORMATION

# 576,852

## TOTAL POPULATION

Over 70% of residents work in Somerset



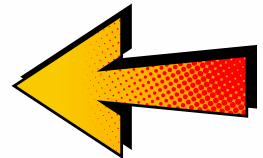
### EST. 25,000 ACTIVE ENTERPRISES

Over 95% of businesses are small or medium sized

### AVERAGE WEEKLY EARNINGS ARE £580

76% of working age residents are employed

Somerset is emerging as a regional leader in the green economy, with over 3,000 jobs now linked to low-carbon and environmental goods and services.



## GROWTH SECTORS IN SOMERSET



**ENERGY**

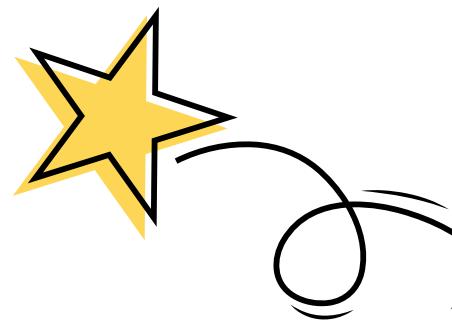
**ENGINEERING**

**DIGITAL AND CYBER SECURITY**

**AGRICULTURE**

**HEALTH AND SOCIAL CARE**

# EXPLORING CAREER OPTIONS NEAR YOU!



When you start thinking about your future, it's important to explore all your options, including the opportunities available where you live.

Many people choose to work close to home, so finding out which jobs are in demand locally can help you make smart choices about your next steps.

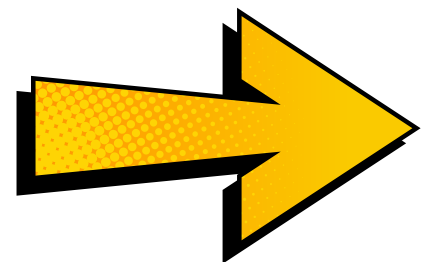
By exploring what's happening in your area, you can learn which industries are growing, connect with local employers, and find out what colleges or training providers can help you get there.

## How can exploring options and labour market information (LMI) help you?

- It shows which careers are in demand locally and sometimes across the country.
- It highlights the skills and qualifications employers are looking for.
- It gives you an idea of the typical salaries for different jobs.


In Somerset, some of the key growth areas are:

- Energy
- Engineering
- Digital and Cyber Security
- Health and Social Care
- Agriculture



By using LMI, you can choose school subjects, training, or work experience that match future opportunities helping you plan for a successful career.



A young man wearing a white hard hat, a high-visibility yellow safety vest over a dark long-sleeved shirt, and dark pants is standing on a roof. He is holding a red tool, possibly a screwdriver or a small saw, and looking down at it. The roof is covered with rows of blue solar panels mounted on metal racks. A yellow cable runs across the panels in the foreground. The background shows a clear blue sky and more solar panels extending into the distance.

# EXPLORING THE ENERGY SECTOR

# ENERGY SECTOR

The energy sector offers exciting careers that help power the world. You could be an engineer building wind turbines, an electrician keeping homes safe, or a scientist researching cleaner energy. Technicians maintain power stations and EV chargers, while IT experts design smart systems to save energy. Whether you like science, tech, or working outdoors, this field lets you make a real difference.

## DID YOU KNOW?

People who work in energy help power everything from homes to hospitals.

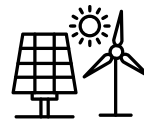
## ENERGY COMPANIES IN SOMERSET



EDF Energy



Octopus Energy



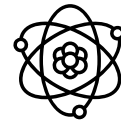
Renewable Equipment Solutions (R.E.S)



Wessex Water Energy Recovery



GB NRG



Nuclear Restoration Services (NRS)

## SECTOR JOB ROLES:

### ENTRY

- Electrical Apprentice
- Trainee Technician – Solar/Wind/Nuclear

Typical Salary: £16,000-£22,000

### INTERMEDIATE

- Qualified Electrician
- Heating Engineer
- Renewable Energy Installer (Solar, Heat Pumps)

Typical Salary: £25,000-£38,000

### ADVANCED

- Nuclear Engineer
- Renewable Project Manager
- Grid and Systems Engineer
- Environmental Consultant

Typical Salary: £40,000-£65,000

## WHAT SUBJECTS TO FOCUS ON AT SCHOOL

- Computing- IT
- Maths
- Geography
- Design and Technology
- Science



**EXPLORING THE  
ENGINEERING  
SECTOR**



# ENGINEERING SECTOR

Engineering in Somerset is all about designing, building, and fixing the things that keep our world running. You could work on huge projects like Hinkley Point C nuclear power station, help build wind turbines or solar farms, or design smart batteries and electric cars. Engineers use maths, science, and creativity to solve problems, work with teams, and make sure everything is safe and works properly. If you like building, experimenting, or figuring out how things work, a career in engineering in Somerset can be exciting and full of opportunities.

## DID YOU KNOW?

Engineers are problem solvers, they design, build, and fix things that keep the world working.

## ENGINEERING COMPANIES IN SOMERSET



**Berry & Escott Engineering**



**Numatic**



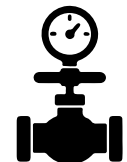
**Singer Instruments**



**Jo Bird**



**William Haley Engineering Ltd**



**Brewis Engineering Ltd**

## SECTOR JOB ROLES:

### ENTRY

- Apprentice Electrical Engineer/ Mechanical Technician
  - Junior Workshop Assistant
- Typical Salary: £16,000-£22,000

### INTERMEDIATE

- Qualified Electrical Engineer
  - Mechanical Engineer
  - CAD Technician
  - Site Supervisor or Team Leader
- Typical Salary: £25,000-£38,000

### ADVANCED

- Design Engineer or Project Engineer
  - Senior Mechanical or Electrical Engineer
  - Engineering Manager
- Typical Salary: £40,000-£65,000

## WHAT SUBJECTS TO FOCUS ON AT SCHOOL

- Computing- IT
- Maths
- English
- Design and Technology
- Science



A man with a beard and glasses is focused on his laptop in a server room. The background is filled with server racks and glowing blue and red lights, creating a high-tech atmosphere. A speech bubble with a white background and a black border containing the text is positioned in the upper right corner.

**EXPLORING THE  
DIGITAL AND  
CYBER SECURITY  
SECTOR**

# DIGITAL AND CYBER SECURITY SECTOR

The digital and cyber security sector includes protecting computers, networks, and data from hackers and online threats. People working in this field can be cyber security analysts, ethical hackers, or network engineers, making sure that websites, apps, and computer systems are safe. They also create software and security tools to stop cybercrime and protect personal information. If you enjoy computers, problem-solving, and thinking like a detective, a career in digital and cyber security can be exciting, challenging, and very important in today's digital world.

## DID YOU KNOW?

Cyber security pros are like digital detectives, they track footprints, spot threats, and stop hackers in their tracks.

## DIGITAL AND CYBER COMPANIES IN SOMERSET



UK HO



Bouncing Bean



Hatched Agency



Polkadot Agency



Teapot Creative



Techosaurus

## SECTOR JOB ROLES:

### ENTRY

- IT Support Technician
- Junior Cyber Security Analyst
- Network Support Assistant

Typical Salary: £20,000-£28,000

### INTERMEDIATE

- Cyber Security Analyst
- Penetration Tester
- Network Engineer

Typical Salary: £30,000-£45,000

### ADVANCED

- Security Architect
- Cyber Security Consultant
- Chief Information Security Officer

Typical Salary: £50,000-£90,000

## WHAT SUBJECTS TO FOCUS ON AT SCHOOL

- Computing- IT
- Maths
- English
- Design and Technology





**EXPLORING THE  
AGRICULTURAL  
SECTOR**

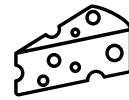
# AGRICULTURE SECTOR

Agriculture can involve growing food, raising animals, and caring for the land. Jobs range from farming and livestock care to roles in science, technology, and business, like improving crops or developing smarter machines. If you enjoy the outdoors, problem-solving, and protecting animals or the environment, a career in agriculture can be exciting and vital for feeding the world.

## DID YOU KNOW?

Milk maths! A single dairy cow can produce over 6,000 litres of milk a year, that's enough for around 100,000 cups of tea

## AGRICULTURAL COMPANIES IN SOMERSET:



Wykes Farm



Coombe Farm Organic



Shearwell Data Ltd



Wessex Grain Ltd



Sheppy's Cider Farm



Branston

## SECTOR JOB ROLES:

### ENTRY

- Farm Hand (Helper)
- Agricultural Worker
- Tractor Assistant

Typical Salary: £28,000- £30,000

### INTERMEDIATE

- Animal Health Technician
- Crop Expert (Agronomist)
- Farm Machine Engineer

Typical Salary: £30,000-£45,000

### ADVANCED

- Farm Business Manager
- Agricultural Sales Leader
- Agritech Entrepreneur

Typical Salary: £48,000-£70,000

## WHAT SUBJECTS TO FOCUS ON AT SCHOOL

- Science
- Maths
- Geography
- Design and Technology





**EXPLORING THE  
HEALTH AND  
SOCIAL CARE  
SECTOR**

# HEALTH AND SOCIAL CARE SECTOR

Health and social care is all about supporting people to stay healthy, safe, and happy. Jobs in this area include nurses, care workers, and social workers who help children, adults, and older people. They might provide medical care, personal support, or guidance to families. If you enjoy helping others, working with people, and making a positive difference, a career in health and social care could be both rewarding and meaningful.

## DID YOU KNOW?

Nurses – A nurse can walk up to 5 miles in a single shift while caring for patients. That's like doing a mini-marathon every day!

## HEALTH AND SOCIAL CARE COMPANIES IN SOMERSET



Somerset Care Ltd



Barchester Healthcare



Somerset NHS



Helping Hands Home Care



Nuffield Health



Bupa Health

## SECTOR JOB ROLES:

### ENTRY

- Care Worker
- Support worker
- Home Care Assistant
- Healthcare Assistant

Typical Salary: £15,704 - £25,000

### INTERMEDIATE

- Senior Carer
- Senior Support Worker
- Social Worker

Typical Salary: £25,000-£40,000

### ADVANCED

- Advanced Practitioner
- Social Worker
- Operations Manager in Health & Social Care

Typical Salary: £41,000-£42,000

## WHAT SUBJECTS TO FOCUS ON AT SCHOOL

- Science- Biology
- Maths
- English
- Health and Social Care





# SKILLS AND QUALIFICATIONS

When you finish your studies, it's important to think about the skills and qualifications you will need for the future. Different jobs and careers ask for different levels of training, some might need A-levels or vocational courses, while others may require an apprenticeship or a university degree.

Alongside qualifications, employers also look for skills such as teamwork, problem-solving, communication, and resilience. Thinking about both your academic pathway and your personal strengths can help you choose the right next steps, whether that is continuing in education, gaining hands-on experience, or a mix of both.

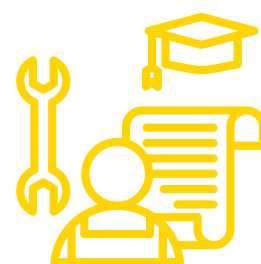
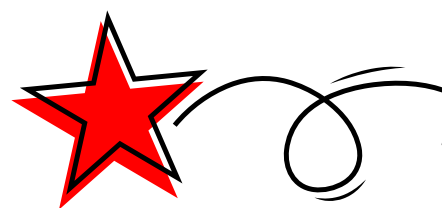
## Routes available after studying GCSEs:

- **A Levels** – study academic subjects to prepare for university or higher education.
- **T Levels** – new courses combining classroom learning with work placements, focused on specific industries.
- **Vocational Qualifications (e.g. BTECs, NVQs)** – practical courses linked to careers like business, health, or engineering.
- **Apprenticeships** – work while you train, gaining qualifications and experience at the same time.
- **Traineeships** – short programs to help build skills and confidence before starting an apprenticeship or job.
- **Supported Apprenticeships** - apprenticeships with extra help for learners with special educational needs or disabilities.
- **Supported Internships** - work based programmes with job coach support for young people with an EHC plan.



# EXPLORING PATHWAYS NEAR YOU!

Provider	What they offer?
<a href="#"><u>6th Forms</u></a>	From Page 66-67, A-Levels and Vocational Courses
<a href="#"><u>Pro Apprenticeships</u></a>	Apprenticeship pathways from Level 2 upwards.
<a href="#"><u>Richard Huish College</u></a>	A-Levels, T-Levels apprenticeships & vocational courses.
<a href="#"><u>Somerset Skills &amp; Learning (SS&amp;L)</u></a>	Vocational Courses, Apprenticeships and Supported Internships
<a href="#"><u>UCS-Bridgewater College</u></a>	A-Levels, T-Levels, Vocational Courses, Apprenticeships and Supported Internships
<a href="#"><u>UCS- Cannington College</u></a>	Vocational Courses- referring to land-based pathways such as Agriculture and Animal Care
<a href="#"><u>UCS-Taunton College</u></a>	T-Levels, Vocational Courses, Apprenticeships and Supported Internships
<a href="#"><u>UCS- Strode College</u></a>	A-Levels, T-Levels, Vocational Courses, Apprenticeships and Supported Internships
<a href="#"><u>UCS- University Centre Somerset</u></a>	Higher Level Pathways including Degree's and Degree Apprenticeships.
<a href="#"><u>Yeovil College</u></a>	A-Levels, T-Levels, Apprenticeships, Vocational Courses and Supported Internships.

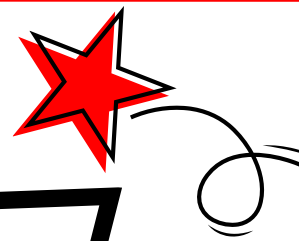




# EXPLORING EMPLOYERS in somerset



# JONES BUILDING GROUP



Jones Building Group, established in 1979, is a leading Property Services provider directly employing over 200 people operating across the South of England, with offices in Yeovil, Exeter, Portishead, Bodmin, and Eastleigh. With a strong foundation built on family values, a commitment to excellence, and a track record of gaining repeat business, we take pride in our long-standing reputation for quality, reliability and delivering project "a level above"

**What Apprenticeships do we offer?**

- Business administration
- Bricklaying
- Carpentry
- Painting & Decoration

**We offer Work Experience for young people- To apply for work experience please contact us directly:**

**Jones Building Group- Work Experience**

## **WHAT SERVICES DO WE OFFER?**

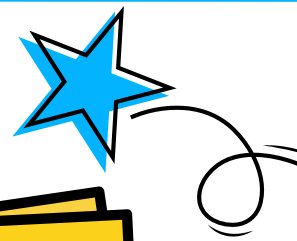
- Property Services
- Pre-Paint Repair & Decoration
- Painting and Decorating
- Fire Safety (BM-Trada Certified)
- Maintenance and Responsive works
- Decarbonisation Solutions (PAS)

## **WHAT QUALITIES DO YOU LOOK FOR IN EMPLOYEES?**

- Genuine desire to work
- Flair for learning new skills
- Good attitude towards hard work



# MÜLLER UK & IRELAND



## What Apprenticeships do Müller offer?

- Level 3 Engineering Technician,
- Manufacturing Operatives
- HGV Technician
- Level 5 Supply Chain Degree.

## What Graduate Schemes do Müller offer?

- Finance, Category, Marketing, Packaging, Commercial, Supply Chain, Early Careers, R&D, Logistics

Müller UK & Ireland is wholly owned by Unternehmensgruppe Theo Müller, a family owned business which employs over 33,000 people throughout Europe.

Servicing customers with strategic partnerships throughout the UK & Ireland, while exporting to over 60 countries internationally, the business develops, manufactures and markets a wide range of branded and private label dairy products made with milk from over 1,000 farmers in Britain, alongside a designated plant-based range.

Müller is one of the ten most chosen FMCG brands in Great Britain, and the most popular dairy brand. It is ranked within the top 20 in The Grocer's Top 100 list of Britain's Biggest Brands and is picked from shelves millions of times each year. Müller UK & Ireland includes:

Müller Milk & Ingredients, which aims to build a better dairy future. It produces branded and private label fresh milk, powdered milk, cream, butter, milk drinks and ingredients products, and boasts a network of dairies and depots servicing customers throughout the UK and beyond.

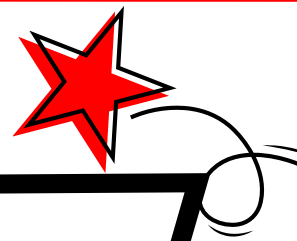
We offer Work Experience for young people- To apply for work experience please contact us directly:  
[earlycareers@muller.co.uk](mailto:earlycareers@muller.co.uk)

## WHAT QUALITIES DO YOU LOOK FOR IN EMPLOYEES?

- A willingness to learn
- Effective communicators
- Well organised
- Driven
- Collaborative
- Problem Solvers



# SOMERSET LARDER



Looking for a career that's full of flavour?  
Somerset Larder is a multi-award-winning employer based right here in Somerset, serving up top-quality food and drink for the HPC project. But we're more than just great food — we're proud to be a major local employer and a growing favourite among young people looking to kickstart their careers.

We believe in opening doors for everyone. That's why we work closely with schools, colleges, and other education providers to help young people get ready for the world of work.

How do we support young people?  
Whether it's through work experience, apprenticeships, or personalised learning programmes, we're here to support your journey, giving you the skills, confidence, and opportunities to grow.

At Somerset Larder, your future is on the menu.

What Apprenticeships do we offer?

- L2 Commis Chef
- L2 Hospitality Team Member
- L2 Warehousing & Supply Chain
- L3 Chef De Partie
- L3 Team Leader
- L5 Operational Management
- L3 Digital Marketing
- L7 People Professional

## DOES SOMERSET LARDER OFFER WORK EXPERIENCE?

Yes, we do!  
Please apply to  
[academy@somersetlarder.co.uk](mailto:academy@somersetlarder.co.uk)

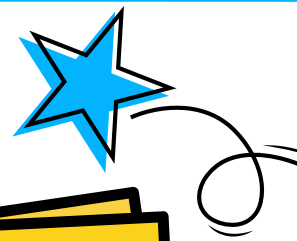
## WHAT QUALITIES DO YOU LOOK FOR IN EMPLOYEES?

- Great communication skills
- Team Spirit
- Resilience and strength
- Integrity
- An understanding of the workplace



**SOMERSET  
LARDER**

nourishing the community



## Do we offer Work Experience?

Somerset NHS Foundation Trust offers work experience (shadowing) in range of areas to help people in making career decisions and to support applications for further study, employment, apprenticeships, and other opportunities.



## Do we offer Graduate Schemes?

The NHS runs a national Graduate Management Training Scheme, and there are also training programmes for specific professions, such as the Scientist Training Programme (STP). Somerset NHS Foundation Trust also recruits graduates into a range of roles

Somerset NHS Foundation Trust runs hospital services, community services, mental health and learning disability services and a quarter of Somerset's GP practices. We care for patients mainly from Somerset but also from North Somerset, the west of Dorset and north of Devon.

In addition to providing a wide range of patient services, we also contribute to training the next generation of healthcare professionals and conduct research that will help to advance clinical practice and treatments in the future.

Within our trust we are privileged to work with over 12,500 colleagues who deliver or support our patient services. From therapists to nurses, doctors, researchers, scientists, porters, cleaners, kitchen staff, accountants, those who teach and the receptionists who welcome our patients, the contribution of all of our colleagues is invaluable.

## WHAT QUALITIES DO YOU LOOK FOR IN EMPLOYEES?

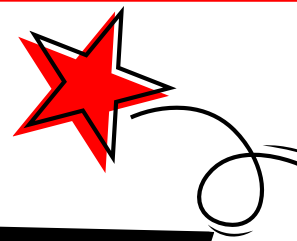
- Able to demonstrate NHS Trust Values
- Good understanding of the job roles
- Willingness to learn
- Good Communication skills

## WHAT APPRENTICESHIPS DO YOU OFFER?

What Apprenticeships does the NHS offer?

Somerset NHS Foundation Trust offers 71 different apprentice programmes both clinical and non-clinical from Level 2 to Level 6, more information about the apprenticeships we offer and how to apply can be found here: [Apprenticeships - Recruitment](#).

# LEONARDO



As one of the UK's leading engineering companies and a global player in Aerospace, Defence and Security, Leonardo offers a variety of exciting early career opportunities and the chance to work on some of the UK's most challenging engineering programmes. Leonardo is committed to maintaining its skilled workforce, and recognises the need to expand the UK's pool of engineering resources. At the Helicopters Division in Yeovil, we are involved in the end-to-end helicopter capability in design, development, manufacture, support and training.

## DOES LEONARDO OFFER WORK EXPERIENCE?

Yes – Leonardo work with local schools and try to align our offer with the dates that schools allow young people to attend placements.

## WHAT APPRENTICESHIPS DO YOU OFFER?

- Engineering Technician in one of the following pathways
  - Aerospace Manufacturing Fitter
  - Aerospace Manufacturing Electrical/Mechanical and Systems Fitter
  - Machinist- Advanced Manufacturing Engineering
  - Technical Support Technician
- Aerospace Engineer
- Machining Technician
- Engineering Manufacturing Technician

## WHAT GRADUATE SCHEMES DO YOU OFFER?

- Engineering
- Procurement
- Project management

What qualities do you look for in employees?

- Analytical Mind
- A strong team player
- Conscientious
- Keen to learn
- Tenacious
- Fresh Thinker
- Enthusiastic
- A keen interest in the Aerospace Industry



Apprenticeships are a key part of our internal progression for employees. However, we are reviewing this regularly and if any opportunities are available, they will be advertised on our website.

**What Graduate Schemes do Screwfix offer?**

We offer an Early Careers programme in our Head Office functions open to graduates and non-graduates. Keep an eye on our [Screwfixcareers.com](https://www.screwfixcareers.com) website as any Early Careers opportunities will be advertised there.

Screwfix is the UK's leading retailers for tradespeople, offering over 70,000 products through our website, contact centre, and more than 950 stores across the UK and Ireland. We're also part of the Kingfisher Group, which includes other well-known brands like B&Q. At Screwfix, we're all about getting the job done, quickly, smartly, and with a no-fuss attitude.

Our fast-paced environment is full of energy, ideas, and opportunities to grow. Whether you're helping customers, working behind the scenes, or developing new ways to improve how we work, you'll be part of a team that values honesty, innovation, and doing the right thing.

We believe in supporting each other and creating a workplace where everyone can be themselves and do their best. If you're curious, motivated, and ready to make a difference, Screwfix could be the perfect place to start your career journey.

Screwfix are reviewing their work experience offer so opportunities are not currently available.

## WHAT QUALITIES DO YOU LOOK FOR IN EMPLOYEES?

- Adaptable
- Able to work in a team
- Curious
- Innovative
- Customer Focused

# YTL UK AND WESSEX WATER



YTL UK Group is made up of nine distinctive companies, each with ambitious plans for the future. Our portfolio of award-winning companies work across various sectors, including water, engineering, property and entertainment, and share a common aim of delivering excellence.

Wessex Water are a water and sewerage company we provide essential services to 2.9 million customers across the south west of England. We provide fresh, high quality water services to 1.4 million customers and sewerage services to 2.9 million customers living in the south west of England. Once they are finished with their water, we then take it away, clean and treat it before distributing it back into the environment.

What Graduate Schemes do we offer?

Our graduate scheme is currently being refreshed. At this time we offer entry level roles that are suitable for graduates with a relevant degree.

What Apprenticeships do we offer?

- IT
- Business Administration
- Human Resources (HR)

Apprenticeships are offered Level 2- Level 6

## DO WE OFFER WORK EXPERIENCE?

Apply on-line at from January 2026  
[YTL UK | Careers | Work experience](#)

## WHAT QUALITIES DO YOU LOOK FOR IN EMPLOYEES?

For Level 2 and 3 apprenticeships, we do not require CVs. Instead, recruitment is based on an apprentices' Skills, Values and Potential. The recruitment process includes opportunities for applicants to demonstrate their skills and values at an assessment centre, before the interview stage.

**YTL UK**  
YTL GROUP



# HINKLEY POINT C | EDF ENERGY

## What Apprenticeships do Hinkley Point C offer?

- Apprenticeships are offered in more than 70 different standards. They range from welding to nuclear engineering and finance to catering.

## What Graduate Schemes do Hinkley Point C offer?

- Graduate schemes are available through EDF Early Careers.

Young HPC is a free skills programme for 14 – 21 year-olds who are thinking about their next steps after school/college and are interested in apprenticeships or jobs at HPC.

Members can access exclusive careers workshops, tools, and resources to help them expand their knowledge, increase confidence, and feel ready to submit apprenticeship/job applications. They're amongst the first to hear when new HPC/EDF apprenticeships go live and get the first chance to book their place at selected HPC recruitment events where spaces are limited.

Exclusive Young HPC activities help members develop new skills, increase knowledge, prepare for all stages of the apprenticeship/job application process, and access opportunities to apply for positions across the HPC project.

All the workshops on offer include activities that can be completed to earn nationally recognised Digital Badges in line with the workshop content (such as quizzes, STEM challenges, and practical tasks like CV and cover letter writing).

[log into your profile](#)

Work experience placements must be arranged through a Hinkley Point C contractor partner; individuals must be 16 years old or above.

## WHAT QUALITIES DO YOU LOOK FOR IN EMPLOYEES?

We focus on potential. Our skills-based hiring focuses on your current abilities and potential to acquire new skills. We assess your

- motivational skills
- behaviours
- strengths

This helps us to look for individuals who can grow with us.



Stantec empowers clients, people, and communities to rise to the world's greatest challenges at a time when the world faces more unprecedented concerns than ever before.

We are a global leader in sustainable engineering, architecture, and environmental consulting. Our professionals deliver the expertise, technology, and innovation communities need to manage aging infrastructure, demographic and population changes, the energy transition, and more.

## What Apprenticeships do we offer?

- Civil Engineering
- Building Services
- Digital Design
- Structural Engineering
- Transport Planning

Plus other opportunities too.

## What Graduate Schemes do we offer?

Our Graduate Programme includes core training throughout the first three years at Stantec. The programme provides an enhanced training period and a community to engage with throughout your initial Professional Development.

## **DO WE OFFER WORK EXPERIENCE?**

Yes, work experience is organised locally in each office. Please contact your local office to enquire, if you are interested in undertaking work experience with Stantec.

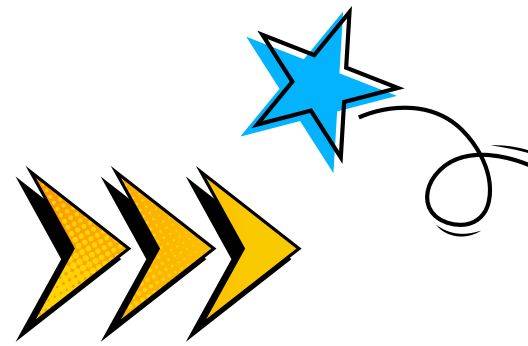
## **WHAT QUALITIES DO YOU LOOK FOR IN EMPLOYEES?**

Aside from the required academics (stated on all job adverts for our grad and apprentice roles), we seek dynamic individuals who are ready to thrive in a fast-paced environment.



# Stantec

# USEFUL LINKS TO PLAN YOUR NEXT STEPS



## EDUCATION AND CAREER PLANNING

**Your Future – Somerset Council A comprehensive guide for 16–19 year olds (and up to 25 with SEND) covering education, training, apprenticeships, and employment options in Somerset**

**National Careers Service – Post-16 Options Offers guidance on A-levels, T-levels, apprenticeships, and vocational routes, plus tools to explore career paths and skills assessments**

**Save My Exams – What’s Next After GCSEs A student-friendly breakdown of post-GCSE options including A-levels, T-levels, and vocational courses, with tips on choosing the right path**

**Your Future Sorted- Directories-DSTPN. Directories for school students, parents, teachers and stakeholders in Somerset**

## APPRENTICESHIPS AND TRAINING

**Find an Apprenticeship – GOV.UK Search and apply for apprenticeships across Somerset and beyond.**

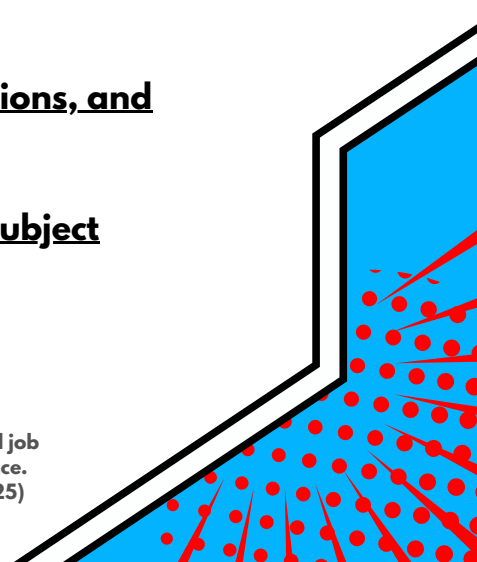
**Amazing Apprenticeships National resource hub with guides, vacancy listings, and employer insights.**

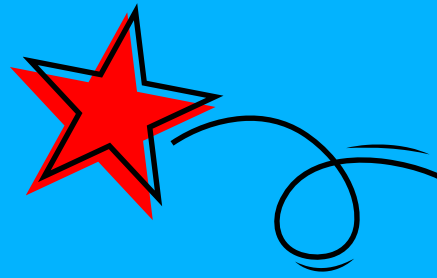
**UCAS The go-to site for researching and applying to university courses.**

## EMPLOYMENT AND SKILLS

**Careerpilot Interactive tools to explore careers, qualifications, and pathways.**

**Success at School Career guides, employer insights, and subject choices linked to future jobs.**





**Somerset**  
CAREERS HUB

THE **CAREERS &  
ENTERPRISE**  
COMPANY

CAREERS 4  
ALL YEARS

